



A RICH HISTORY A PROMISING FUTURE

Generations Giving Campaign
WHITEHALL COMMUNITY PARK YMCA



Many have come before us to pave the way.

The City of Whitehall joined the rally cry of the community to fund the Whitehall Community Park YMCA's building.

Now, we're asking you to join us in planning for the future.

**CITY OF WHITEHALL
MAYOR**

Kim Maggard

**CITY OF WHITEHALL
CITY COUNCIL**

Robert Bailey

Karen Conison

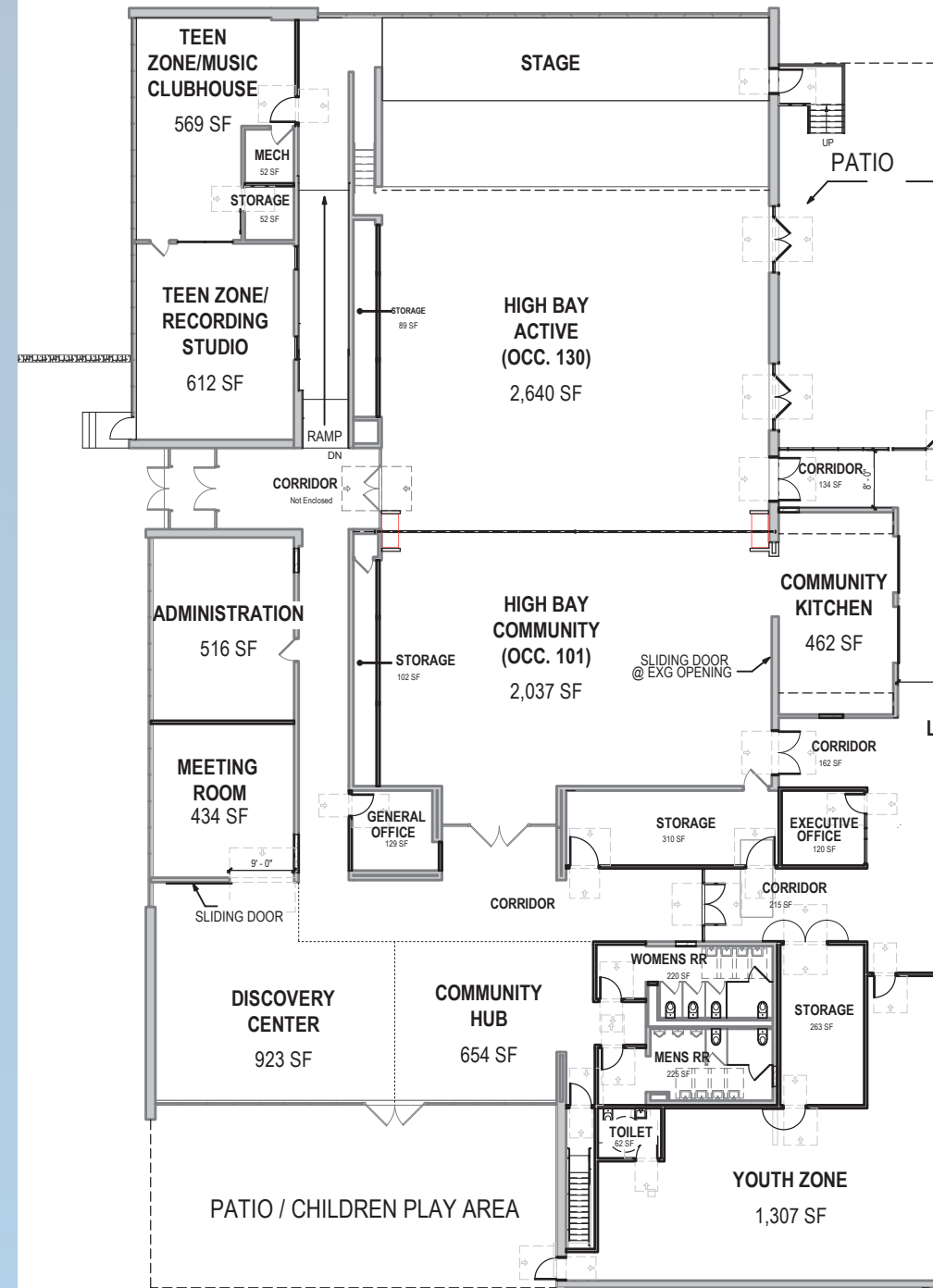
Lori J. Elmore

Jim Graham

JoAnna Heck

Larry Morrison

Chris Rodriguez



Let's grow greater together.

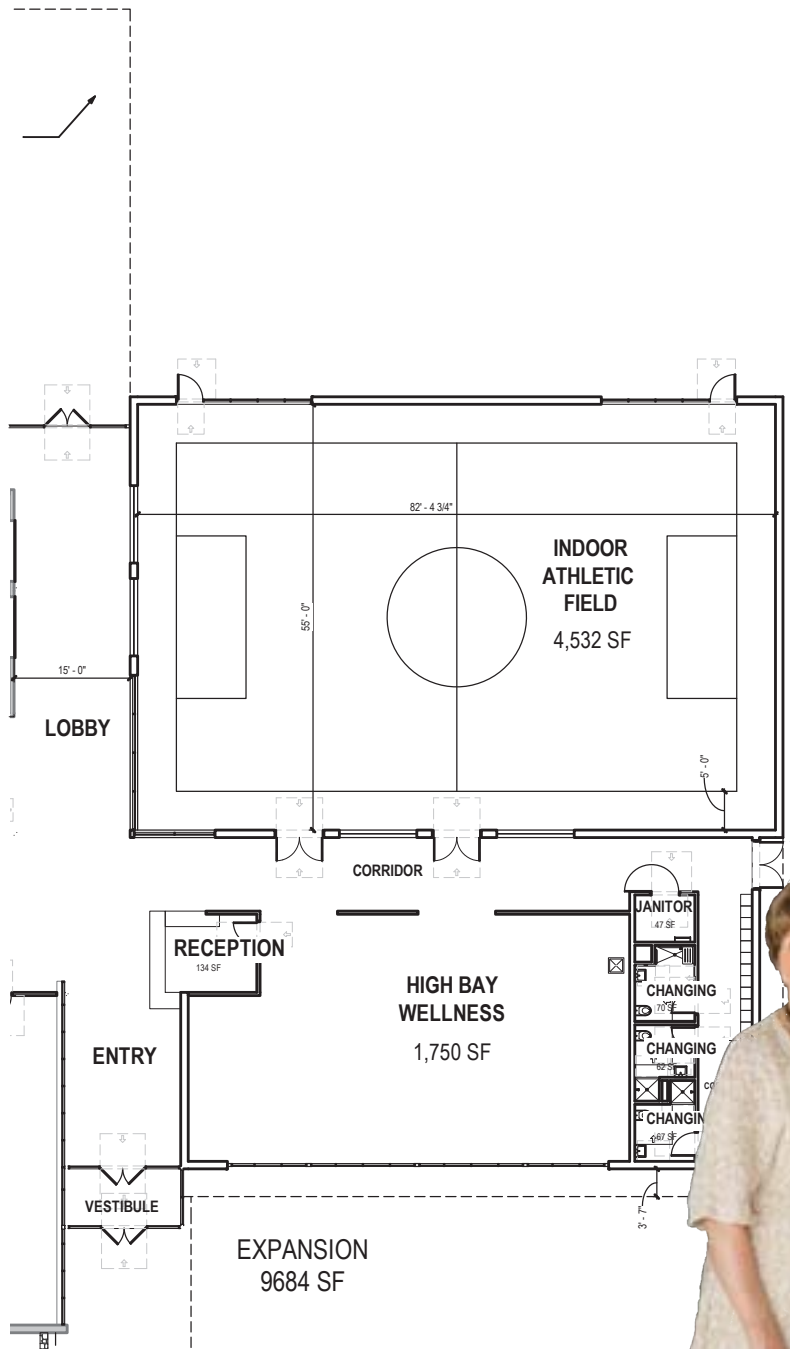
As our community grows more diverse, the Y remains a place that belongs to all of us.

A place where strangers become teammates. Neighbors become friends. And now, the Y is the place where people from all walks of life can come together to build the community that we love.

Whitehall is growing each and every day. The potential is great and the evolution and development of new opportunities is exceptionally exciting.

The Whitehall Community Park YMCA is looking forward to being an integral partner and to serve all who wish to be part of something greater than themselves.

Neighbors by chance.
Community by choice.





YOUTH DEVELOPMENT

Nurturing Every Child and Teens' Potential

With holistic support, children and teens can develop the skills they need to be successful in life. The Y believes that youth development is the social-emotional, cognitive and physical process that all youth uniquely experience from birth to career.

A successful development process fulfills children's and teens' innate need to be loved, spiritually grounded, competent and healthy.

The Y nurtures youth, helping them realize their potential to be active, thriving and contributing members of society.

Programs/amentites include:

- Music Studio
- Performing Arts
- Teaching Kitchen
- Youth Sports

"The After School program makes me feel happy.

I like when I need help with my homework, the tutors are there..."

Lawrence
7th grader

HEALTHY LIVING

Improving the Nation's Health a

At the Y, we believe that being healthy means more than simply being physically active. It is about maintaining a balanced spirit, mind and body. The Y is a leading voice on health and well-being issues, a leader in fighting chronic disease, and is committed to empowering people to lead fuller lives. We bring families closer together, promote healthy living and foster connections through fitness, sports, fun and shared interests.





SOCIAL RESPONSIBILITY

Giving Back and Providing Support to Our Neighbors

As a result, millions of youth, adults and families receive resources, guidance and support needed to become and stay healthy.

Programs/amentities include:

- YMCA Diabetes Prevention Program
- Enhance®Fitness
- Strong Well Fit
- Cycling/Group Fitness (Teens/Adults/Seniors)
- Strength/Cardio Equipment

The Y has been listening and responding to our communities' most critical social needs for more than 160 years. Whether developing skills or emotional well-being through education and training, welcoming and connecting diverse demographic populations through global services, or preventing chronic disease and building healthier communities through collaborations with policy makers, the Y fosters the care and respect all people need and deserve.

Through the Y, 600,000 volunteers and thousands of donors, leaders and partners across the country are empowering millions of people in the U.S. and around the world to be healthy, confident, connected and secure.

Programs include:

- English as a Second Language
- Job Fair Readiness
- Programming for Youth with Disabilities



You Can Help

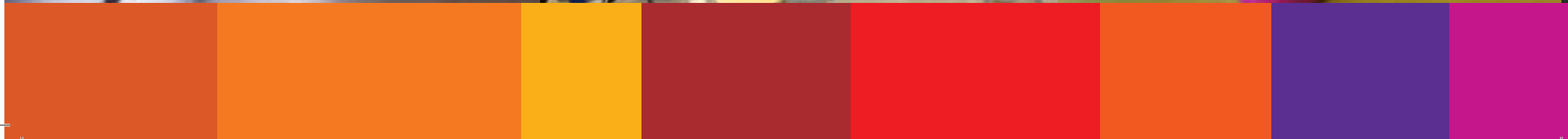
Today, we are calling on everyone who cares about this community to help us fortify our foundation. Help us create the Y that you deserve. So we can help you, and our Whitehall home, grow stronger than ever.

But first, we need your help to start off strong.

With your contribution to the Generations Campaign, we will be able to open our doors with the resources to offer transformational programming from Day 1.

**CAMPAIGN GOAL:
\$650,000**

Actual design of spaces may vary.





Join us in forging a **BRIGHTER** future for our Y.

Your gift will help children, youth and people of all ages lead healthier, more active and more connected lives regardless of their background or financial situation.

PHILANTHROPIC DONATIONS

- Multi-year Pledges
- One-time Cash Gift
- Stocks or Securities
- Life Insurance Policy
- A Bequest in your Will

CORPORATE SPONSORSHIPS

Sponsorship opportunities are available including naming partnerships within the new facility.

Generations Giving Campaign
WHITEHALL COMMUNITY
PARK YMCA



